

# DryFix StuccoPin

Dry mechanical pinning system for securing separated stucco

## Applications

- For re-pinning separated, unstable and potentially dangerous loose stucco which is typically 1" to 2" thick but can vary greatly from 1/2" to 3"
- Suitable where buildings are coated with a hard stucco, keyed to the back-up material by means of a splatter dash application, which is then painted or covered with small tiles to achieve a waterproof finish



For full Product Information, Case Studies and downloadable Repair Details, giving specifications for many common structural faults, go to:

[www.helifix.com/products/retrofit-products/dryfix-stucco-pinning](http://www.helifix.com/products/retrofit-products/dryfix-stucco-pinning)



## Features & Benefits

- Stainless steel helical pin, Grade 304 or 316
- Quick, economical and easy to install
- Requires no grouts, resins or expansion devices
- Avoids tearing off and re-stuccoing
- Avoids chemical anchoring with large pins
- Resists wind loads and ground vibrations
- Effective in all common building materials
- Clean finish / Minimal visual impact

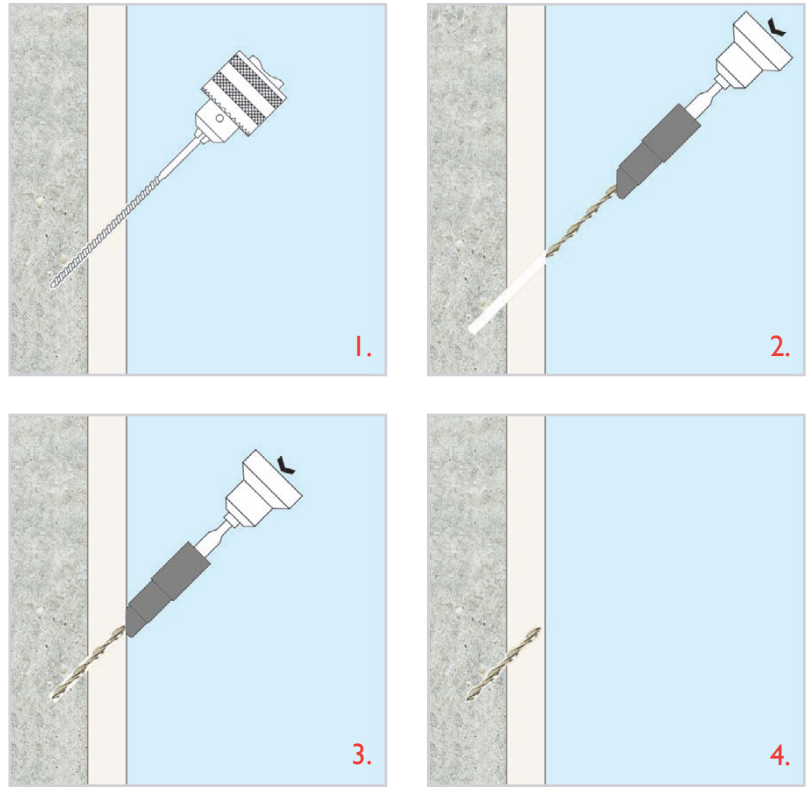


StuccoPin being power-driven into pilot hole

# Installation Procedures

1. Carefully drill an appropriate diameter pilot hole through the stucco and into the back-up substrate, to predetermined depth, using a rotary percussion drill (3-jaw-chuck-type)
2. Load the StuccoPin into the special DryFix Power Driver Attachment fitted to an electric hammer drill (SDS type)
3. Power-drive the StuccoPin into position until its outer end is recessed below the face of the stucco by the Power Driver Attachment
4. Finish over the entry hole with matching materials or sealed as required.

NOTE: StuccoPins can also be installed horizontally at 90° to the face of the stucco



# Technical Specifications

Material:	Austenitic stainless steel Grade 304 or 316	
Diameter:	8mm	
Length:	Stucco thickness + any void + 2" into back-up material	
Diameter of pilot hole:	5mm (determined by on-site testing)	
Depth of pilot hole:	Length of StuccoPin + 1/2"	
Typical spacing:	16" x 16" in a staggered pattern. Varied at the discretion of the specifier to suit site conditions	
Bonding agent:	Normally none required	
Typical Load Performance Characteristics:	Embedment (in")	Max Load (lbs)
	0.500	233
	0.750	615
	1.000	675
	1.125	675
<b>RECOMMENDED TOOLING</b>		
For drilling pilot hole:	Rotary percussion 3-jaw-chuck drill	
For installing StuccoPin:	Power Driver Attachment fitted to an SDS Rotary hammer drill. StuccoPins are recessed 2mm as standard but Power Driver Attachments are available for a flush finish, 8mm recess or 20mm recess	